

# **Speed Reader Enhanced**

## **Product Documentation**



## What is Speed Reader Enhanced?

Speed Reader Enhanced is an app that parses plain text and then displays it word by word at varying speeds. Because the user does not have much time to read the word, he/she must read without vocal activity. Our vocals will sound out anything we read even if it's not out loud. Doing this can slow down the reading process significantly. This app and many others like it, will aid in suppressing vocal activity when you read.

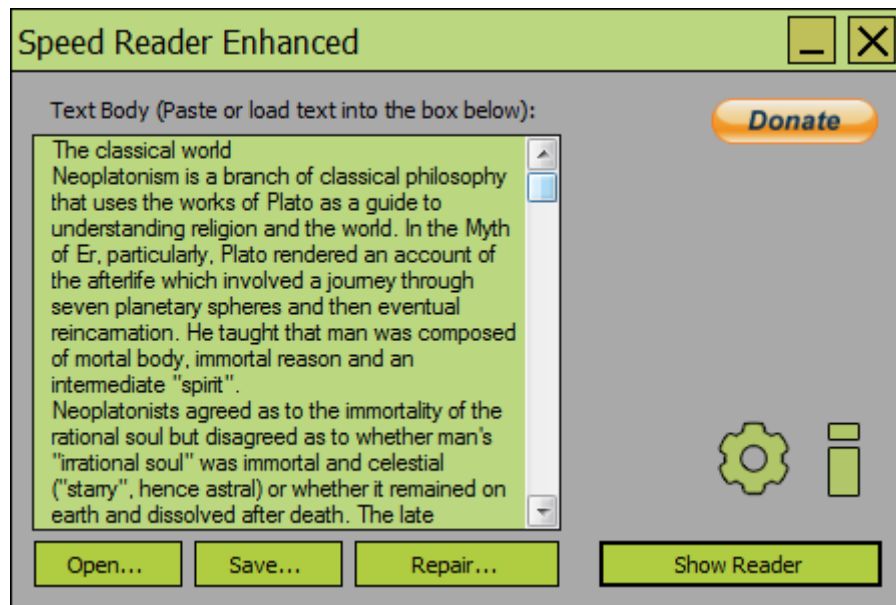
Speed Reader is completely free and open source. It is a .NET application which requires .NET 4.5 or higher to run. It is a light-weight application that will not leave behind any unwanted data.

**Warning: If you are epileptic please refrain from using this method to enhance reading abilities.**



## Main Window

This is the main window is where you will prepare text to be displayed. The button with the gear will open up a general settings window and the button with the info icon will open up an info window.



**Open** - Loads text from a text file into the main textbox. The main textbox will have the text to be broken down and read.

**Save** - An option to save the text in the main textbox to a text file.

**Repair** - Opens the repair window to repair the text in way that it will be easier to read.

**Show Reader** - Shows the Spreeder Window.

## Repair Window

This window will allow you to repair imported text so that it is displayed more fluently. Below is a summary of the options:

***Remove Redundancies*** - This option will reduce repeating characters to something more readable. For example, the array of dots you would often find in a table of contents page; will be reduced to three dots.

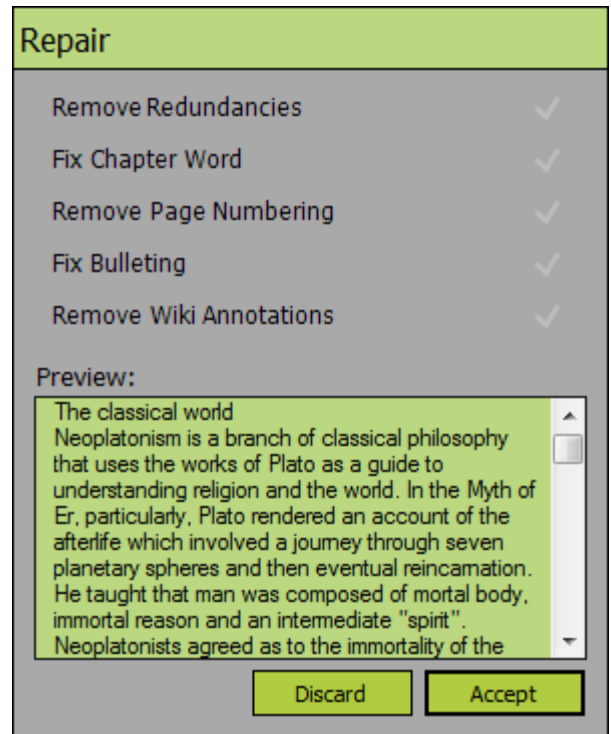
***Fix Chapter Word*** - With many PDF parsers, the word chapter will appear with a capital P (chaPter). This is very distracting (for me at least), so this option will un-capitalize the p.

***Remove Page Numbering*** - Removes the page and chapter numbering from each page. So the text "Page 2" by itself, will be removed.

***Fix Bulleting*** - Brings bullets next to the word following it (It also applies to numbered lists). Doing this makes sure the bullets won't appear by themselves.

***Remove Wiki Annotations*** - Removes annotations like [20] or [edit] from a copied wiki article.

Note: Please contact me if you want me to implement other cleanup logic.



## Preferences Window

Here you can set preferences like how the Spreeder window behaves and how the words are displayed. Below is a list of the individual elements with their descriptions (from top to bottom):

**Base Words Per Minute** - The default amount of words to show per minute. This does not include the weight of the word.

**Combine Threshold** - This states that if two words are to be combined; they must be equal to or less than the threshold. The threshold specifies the amount of characters. So 7 will combine "the dogs" but not anything wider than this because the dogs has 7 characters (not including the whitespace). Set this to 1 to effectively disable.

**Back Track Amount** - Specifies how many words to back track when the backspace key is pressed.

**Approx. WPM (Approximate words per minute)** - An approximation of how many words will be displayed per minute. Of course this cannot be constant as certain words will be displayed longer than others.

**Base Interval** - This displays the time a word is shown for (in milliseconds) without the weight of the word influencing the time.

The screenshot shows a 'Preferences' window with a light green header. The settings are as follows:

Setting	Value
Base Words Per Min	455
Combine Threshold	7
Back Track Amount	16
Approx. WPM	300
Base Interval (MS)	131
Approx. Interval (MS)	200

Below these are the 'Word Weighting' settings:

Category	Value
Ordinary Character	10%
Long Punctuation	30%
Short Punctuation	15%

At the bottom, there are three buttons: 'Clear Bookmarks', 'Restore', and 'Done'. Above the 'Clear Bookmarks' button are two checked options: 'Full Screen' and 'Spreeder Top-most'.

**Approx. Interval** - Like the base interval but is an approximate average interval with the word weighting applied.

Note: The weight of the word is how much longer the word should be displayed for.

**Ordinary Character** - This is the weight of all characters that are not punctuation and not whitespace.

**Long Punctuation** - This weight is applied to the word if the word contains one of the following characters "?", ".", "!".

**Short Punctuation** - This weight is applied to the word if the word contains one of the following characters ",", ";", ":".

**Start Spreeder Full Screen** - Specifies whether or not to open the spreeder window in full screen mode.

**Keep Spreeder On Top** - When checked, the spreeder window will stay on top of other windows.

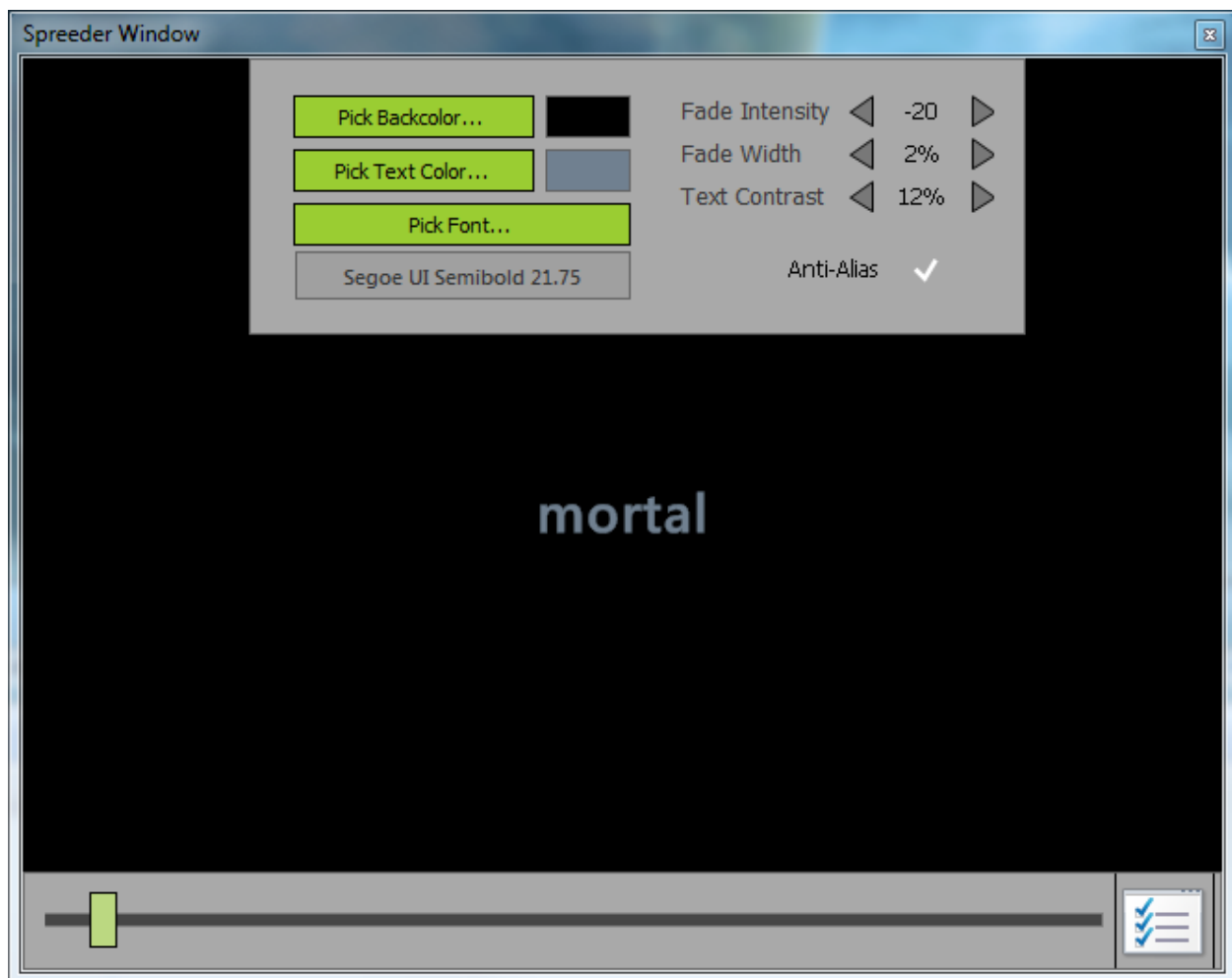
**Clear Bookmarks** - Clears all of the bookmark data. Your documents are identified by the first 30 characters and are automatically bookmarked).

**Restore** - Resets the settings to their default values.

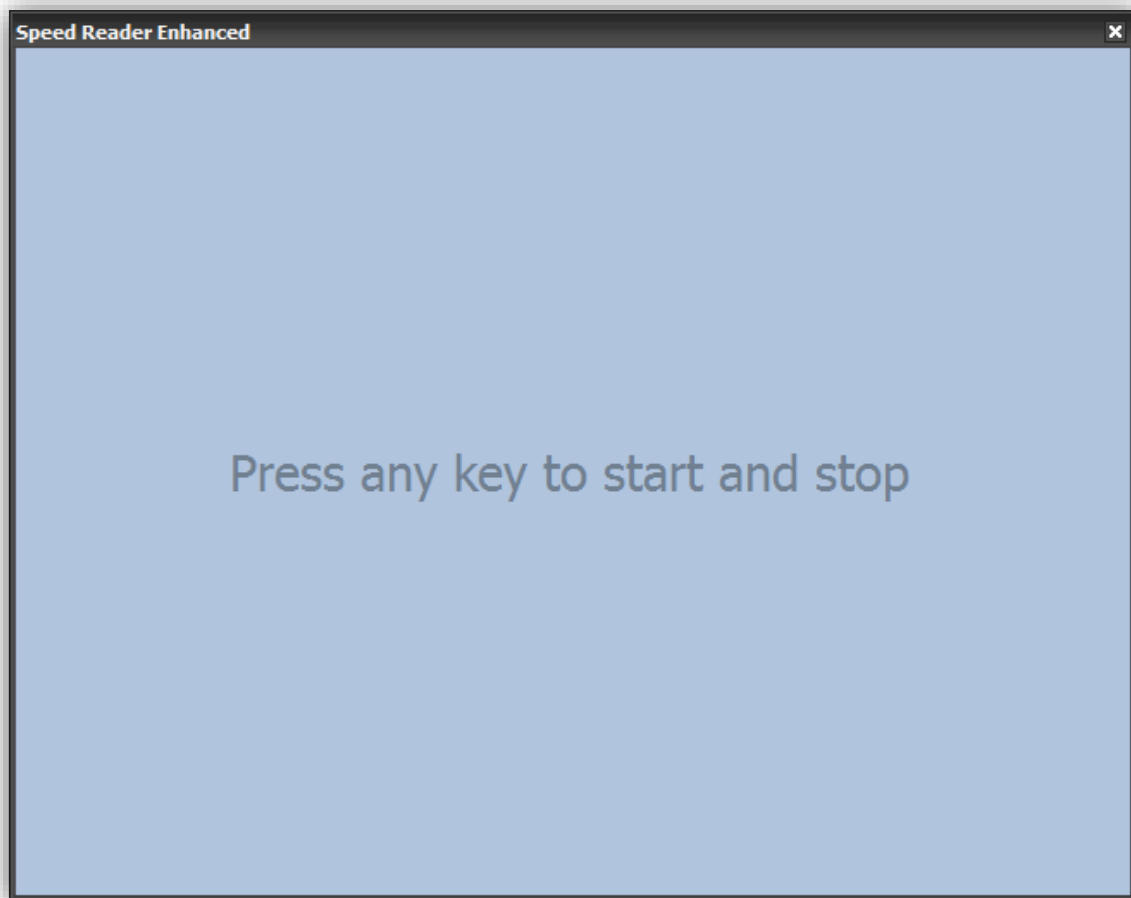
You are probably still wondering how words are timed. So to better depict this I will use the term "Nice read." for an example. We gather all of the percentages so if it contains a period (which it does) we have 20%. We have 8 ordinary characters which will add 40% onto the total percentage to increase. So now we increase the base interval (lets use 300) by 160%; and we will get the display time (being 480 ms). The amount of punctuation in a word does not matter

## Spreader Window

This is the speed reader window, where you will read very fast. When the spreader is paused, a trackbar will appear indicating the reading progress. Next to the track bar is a settings button. You can click this button to show/hide some settings that will allow you to adjust the appearance of the spreader window.



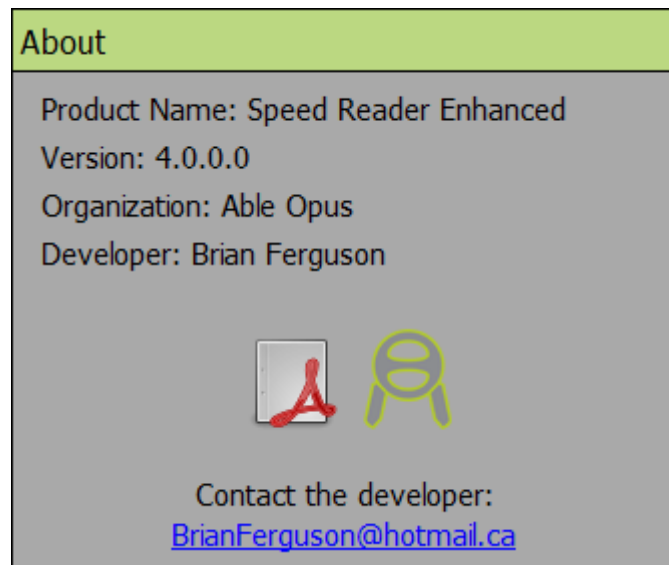
You can use the number keys for timeline control. 5 being 50% through the text, 9 being 90% through the text and so forth. To play/pause the animation, press any key other than the number keys or escape key (the escape key will close the window). You can use the left and right arrow keys to adjust the reading speed. This adjustment will persist after the spreader window has been closed.





## About Window

Here you can view information about the application and view its product documentation (of course you probably know this). You can also contact me for any reason (I appreciate suggestions).



*I truly hope you like this application!*